

## CLUSTER S1

- Each 26x controllable segments on RGB and individual strobe lines
- 720 x RGB LED's & 288 x CW LED's creating massive output
- Continuous pixel pitch of all LED lines between the devices CLUSTER S1 & S2
- Large number of build-in patterns for fast and simple way of creating stunning effects
- IP65 rated for Indoor & Outdoor use
- Integrated C-Lok system for toolfree and seamless CLUSTER setups
- Pre-Link Magnets for easy aligning and "one-handed" operation
- Optional magnetic filters enable distinctive effects in every light show and camera application
- Multiple mounting locations for creative rigging options & floor mount
- 16-bit dimming control for smooth, perfect fades
- Adjustable PWM frequencies up to 25kHz guarantee flicker-free camera operation

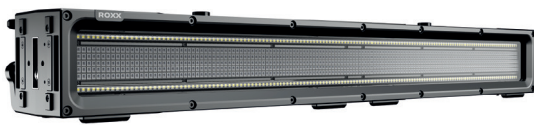
Featuring 720 RGB LEDs and 288 CW LEDs, the CLUSTER S1 delivers a massive output that captivates any audience. With 26 controllable segments on both RGB and individual strobe lines, you have unparalleled control over your lighting environment. Experience seamless transitions and breathtaking effects with the continuous pixel pitch between CLUSTER S1 and S2 devices.

Designed for convenience and performance, the S1 comes equipped with a plethora of features and allows you to choose from a vast library of built-in patterns for effortless creation of stunning effects.

Whether indoors or outdoors, the IP65 rating ensures reliable operation in any environment. Say goodbye to cumbersome setups with the integrated C-Lok system, allowing for tool-free and seamless CLUSTER configurations. Pre-Link Magnets simplify alignment and operation, enabling you to focus on unleashing your creativity.

Enhance your visual repertoire with optional magnetic filters, enabling distinctive effects tailored to every light show and camera application. With multiple mounting locations, including creative rigging options and floor mounting, the S1 offers incredible flexibility in setup.

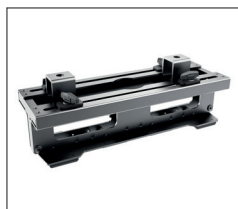
Enjoy smooth, perfect fades with 16-bit dimming control, while adjustable PWM frequencies up to 25kHz guarantee flicker-free camera operation, ensuring your visuals remain flawless in any recording scenario.



### Accessories



Floor Bracket



Rigging Bracket G2



Omega Bracket



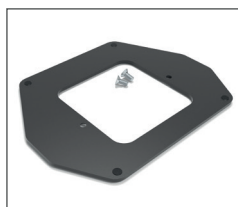
Various filters



FX Distance Frame



Vertical Bracket



Floor Extension



Yoke 4.2 (Optional)



Yoke 4.3 (Optional)



Yoke 2.2 (Optional)

## Technical Data

### Photometrics

LED expected lifetime	50.000 hours
Lightsource	288 x CW LED's (7000K), 720 x RGB LED's
Type of optical system	native, elliptical lens
LED PWM Frequency	selectable 800Hz, 1.200Hz, 2.000Hz, 3.600Hz, 12kHz, 25kHz
Beam angles @ Full (50%)	66°
Maximum Field angles @ Full (10%)	108°
Color temperature range	2000-10.000K
CRI/Ra @ Full	tba
Efficacy @ Full (max)	tba
Luminous flux @ Full	tba
Luminous flux @ 2x Single Strobes (Boost Mode)	tba
Luminous flux @ RGB Panel (Boost Mode)	tba
Luminous flux @ 2x Single Strobes (Illumination Mode)	tba
Luminous flux @ 2x RGB Panel (Illumination Mode)	tba
illuminance Lux @ 3m / 9,84ft (@ Full / Boost Mode)	tba
illuminance Lux @ 3m / 9,84ft (@ 2x Single Strobes / Boost Mode)	tba
illuminance Lux @ 3m / 9,84ft (@ RGB Panel)	tba

### Thermal Characteristics

Cooling	Active, Forced Air, Temperature-regulated
Humidity (max.)	95%
Temperature range, Operating	-40°C to 45°C
Temperature range, Start-Up	-20° to 45°C
Temperature range, Storage	-40°C to 80°C
Thermal Protection	Automatic overtemperature protection

### Electrical Data

AC Power, max	90 – 285V 50/60Hz
AC Power, nominal	100 – 240V 50/60Hz
Electrical protection	Overload protection with automatic recover
Max. power consumption (Boost Mode)	1010W
Constant power consumption (Illumination Mode)	215W
Power Max. Out @ Max. Power Consumption	3,97A @ 230V (910W) / 11,3A @ 100V (970W)
Power Max. Out @ Constant Power Consumption	0,99A @ 230V (215W) / 2,24A @ 100V (220W)
Power Linking @ Max. Power Consumption (Boost Mode)	3 units @ 230V / 0 unit @ 100V
Power Linking @ Constant Power Consumption (Illumination Mode)	11 units @ 230V / 4 units @ 100V
Power Factor @ Max. Power Consumption (Boost Mode)	0.88PF @ 100V / 1,00PF @ 230V
Power Factor @ Constant Power Consumption (Illumination Mode)	0,985PF @ 100V / 0,981 PF @ 230V
Power Supply Unit	Inbuilt auto-ranging electronic switch-mode

### Operator & Controller

DMX channels	12CH Simple, 27CH Easy, 44CH Standard, 138CH Pure, 269CH Pure Extended Mode, 166CH Full Access, 297CH Full Access Extended, 100CH Pure S2 Merge Mode
DMX modes	8
Protocol	USITT DMX512A RDM ANSI E1.20 Art-Net sACN

## Technical Data

<b>Setting and addressing</b>	OLED graphical display / 4 controls RDM ANSI E1.20
<b>Standalone mode</b>	Auto Program, Color Macro, Quick Color, Tunable White, User Color
<b>Wireless DMX</b>	n.a.
<b>Indicator</b>	OLED graphical display
<b>Controls</b>	4 touch sensitive, backlit controls
<b>Strobe</b>	0-30Hz
<b>DMX I/O</b>	IP65 XLR 5-pin male/female
<b>Ethernet I/O</b>	IP65 RJ45 Ethernet male/female
<b>Power In</b>	TRUE1 compatible input & link-thru sockets
<b>USB Firmware Update</b>	IP65 USB socket
<b>Dimensions &amp; Weight</b>	
<b>IP class</b>	IP65
<b>IK class</b>	IK08
<b>Body material</b>	Aluminum, Nylon
<b>Lens material</b>	Tempered glass front
<b>Net dimensions without Yoke (w x h x d)</b>	800 x 100 x 182,5mm
<b>Net dimensions inches</b>	31,49 x 3,93 x 7,19 inches
<b>Net weight</b>	12,84kg / 28,31lbs
<b>Tilt</b>	288°
<b>Tilt Locking System</b>	Yoke positions included (optional Yoke)
<b>Included / Optional</b>	
<b>Included items</b>	2x Puk, 2m Power Cable
<b>Optional Accessories</b>	FX Filter Vertical, FX Filter Horizontal, FX Filter Smoked Clear, FX Distance Frame, Yoke 2.2, Yoke 4.2, Yoke 4.3, Yoke Floor Extension, Floor Bracket, Vertical Bracket, Rigging Bracket G2, Omega Bracket ST
<b>Color options</b>	Black – RAL 9004 (Standard) Custom color – any RAL (on request)
<b>Installation</b>	
<b>Mounting point on fixture top &amp; rear side</b>	2x 1/4 turn Omega Bracket
<b>Mounting point with optional Rigging Bracket G2</b>	2x/4x 13mm / 1/2" holes for Clamp fixation
<b>Mounting point by optional Yokes (vertical mount)</b>	1x/3x 13mm / 1/2" holes, 1x centric TV Spigot attachment, 1x/3x integrated Camlocks for Omega Brackets
<b>Mounting point by vertical bracket on fixtures header side</b>	1x13mm / 1/2" hole, 1x 1/4 turn Omega Bracket
<b>Orientation</b>	Any
<b>Rigging possibilities</b>	direct or due optional rigging accessories
<b>Safety features</b>	2x rear mounts for fixture & accessory safety wire
<b>Minimum distance from flammable materials</b>	0,3 meters (11,8 inch)

**Order Number**

CLUSTER	
S1	13305101
Accessories	Order Number
FX Distance Frame	13908901
FX Filter Smoked Clear	13908801
FX Filter Elliptical Horizontal	13908601
FX Filter Elliptical Vertical	13908701

Accessories	Order Number
Yoke 2.2	13907001
Yoke 4.2	13907701
Yoke 4.3	13907101
Floor Bracket	13908501
Floor Extension	13907201
Rigging Bracket G2	13907411
Vertical Bracket	13908401
Omega Bracket ST	90900002

**Further products of the CLUSTER series:**



CLUSTER B4 W / CLUSTER B4 FC



CLUSTER B2 W / CLUSTER B2 FC



CLUSTER S2

